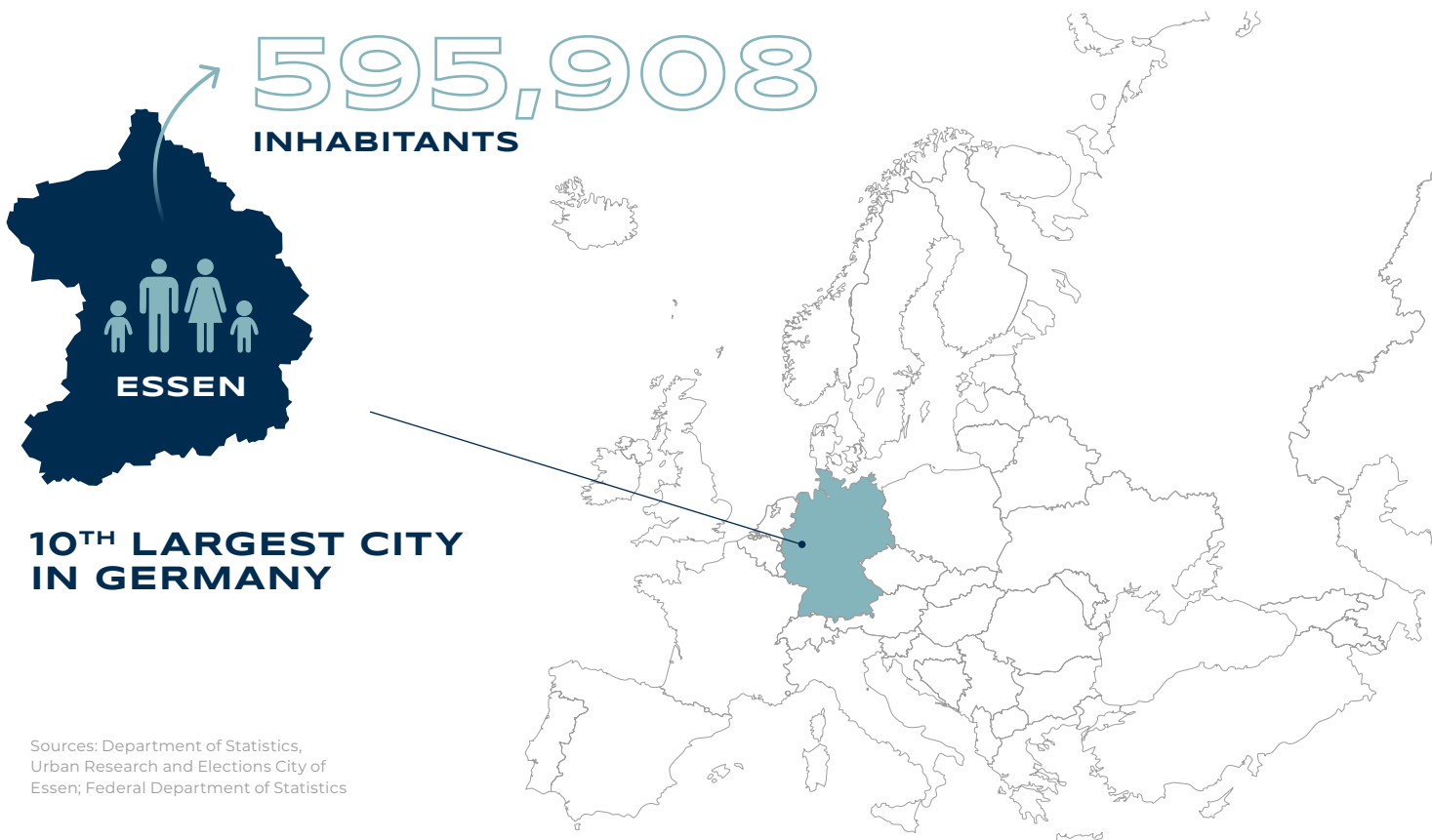




**ESSEN  
BUSINESS**

# INNOVATION IS OUR DNA

Essen is a top business location in the middle of one of Europe's largest metropolitan areas. With globally operating corporations, an efficient SME sector and technology-oriented start-ups, Essen is already on the clear path to a bright future. The secret of success is the entrepreneurial and exploratory spirit. Behind it are people who drive innovation with commitment and passion.



# WHAT WE DO

ESSEN IS THE **LARGEST**  
WORKPLACE  
LOCATION IN THE RUHR AREA.



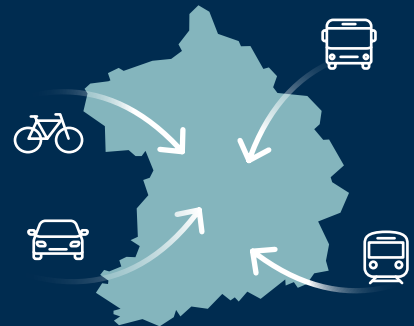
339,115  
**WORKING**  
**PEOPLE**



including  
**266,966**  
employees paying  
SI contributions

Essen is a strong and attractive labour market center and daily attracts

165,852  
**WORKING PEOPLE**  
FROM THE SURROUNDING AREAS.



85.2% of employees paying SI contributions in Essen  
**WORK IN THE SERVICE SECTOR.**

22.0%  of employees paying SI contributions have an  
**ACADEMIC DEGREE**

This means that **Essen has the highest level of graduates in the Ruhr area** and is above the average for North Rhine-Westphalia (18.0%) and Germany (19.3%).

# WHAT WE GENERATE

Between 2016 and 2021 the gross domestic product in Essen increased from 23.8 billion € to 27.1 billion €. This corresponds to an increase of 13.8%. That makes Essen **the fourth force in North Rhine-Westphalia** after Cologne, Düsseldorf and Bonn.

Source: Federal Department of Statistics (Publication: 07/2023)



## OUR COMPANIES

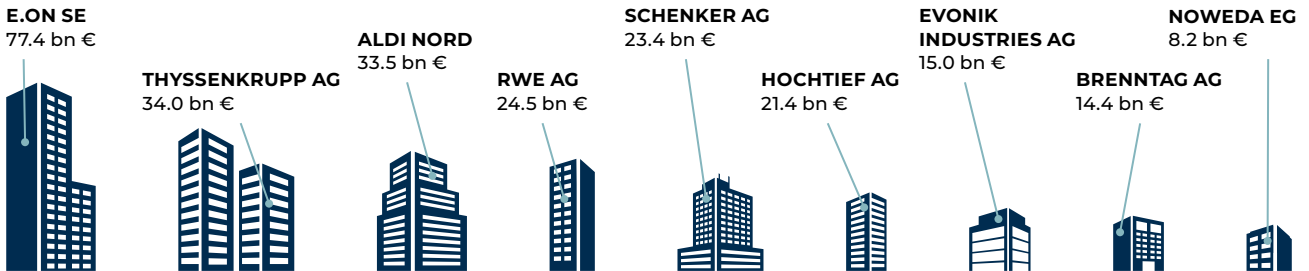
# 23,155

 COMPANIES INCLUDING AROUND 140 START-UPS

Sources: IT.NRW (Status: 2022); EWG own statistics (Status: 2023)

Three DAX-listed corporates **E.ON**, **RWE** and **Brenntag** and three MDAX-listed companies **thyssenkrupp**, **HOCHTIEF** and **Evonik** are

## HEADQUARTERED IN ESSEN

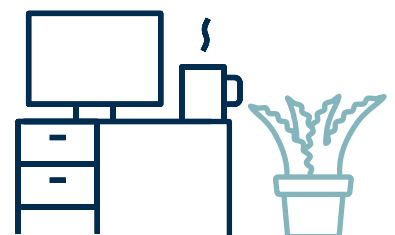


9 of the 100 top-selling companies have their headquarters located in Essen (Turnover 2021).

Source: Die Welt (July 4, 2022)

With **3.17 MILLION m<sup>2</sup>** of the total **RENTAL SPACE**

Essen is **the largest office location in the Ruhr region.**



Source: EWG own statistics

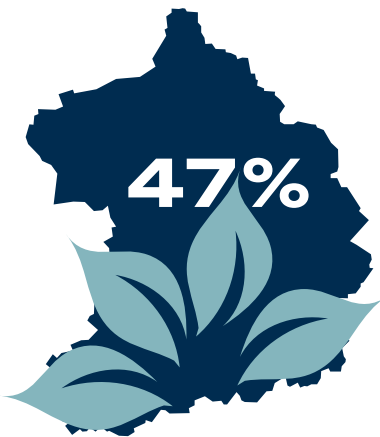
---

## OUR YOUNG TALENTS

University of Duisburg-Essen .....	26,204
FOM University for Economics and Management .....	6,117
Folkwang University of the Arts .....	1,489
Private Art College .....	320
IU University of Applied Sciences .....	534



Source: IT.NRW (Status: Winter Term 2022/2023)



## WHERE WE RELAX

47% of the total area of Essen is green!  
Almost the half of the **European Green Capital 2017** consists of parks, nature reserves, forests, lakes and other green areas.

Source: IT.NRW (Status: 12/2022)

---

## THE ADVANTAGES OF OUR LOCATION AT A GLANCE



- central location
- optimal accessibility
- large customer, sales and labour base potential
- attractive employment market
- high quality of life
- affordable housing
- extensive educational opportunities
- variety of cultural and recreational possibilities

---

More information:



Photo:  
EWG, Julius Gnoth

EWG – Essener  
Wirtschaftsförderungs-  
gesellschaft mbH  
Kennedyplatz 5  
45127 Essen

[www.ewg.de](http://www.ewg.de)