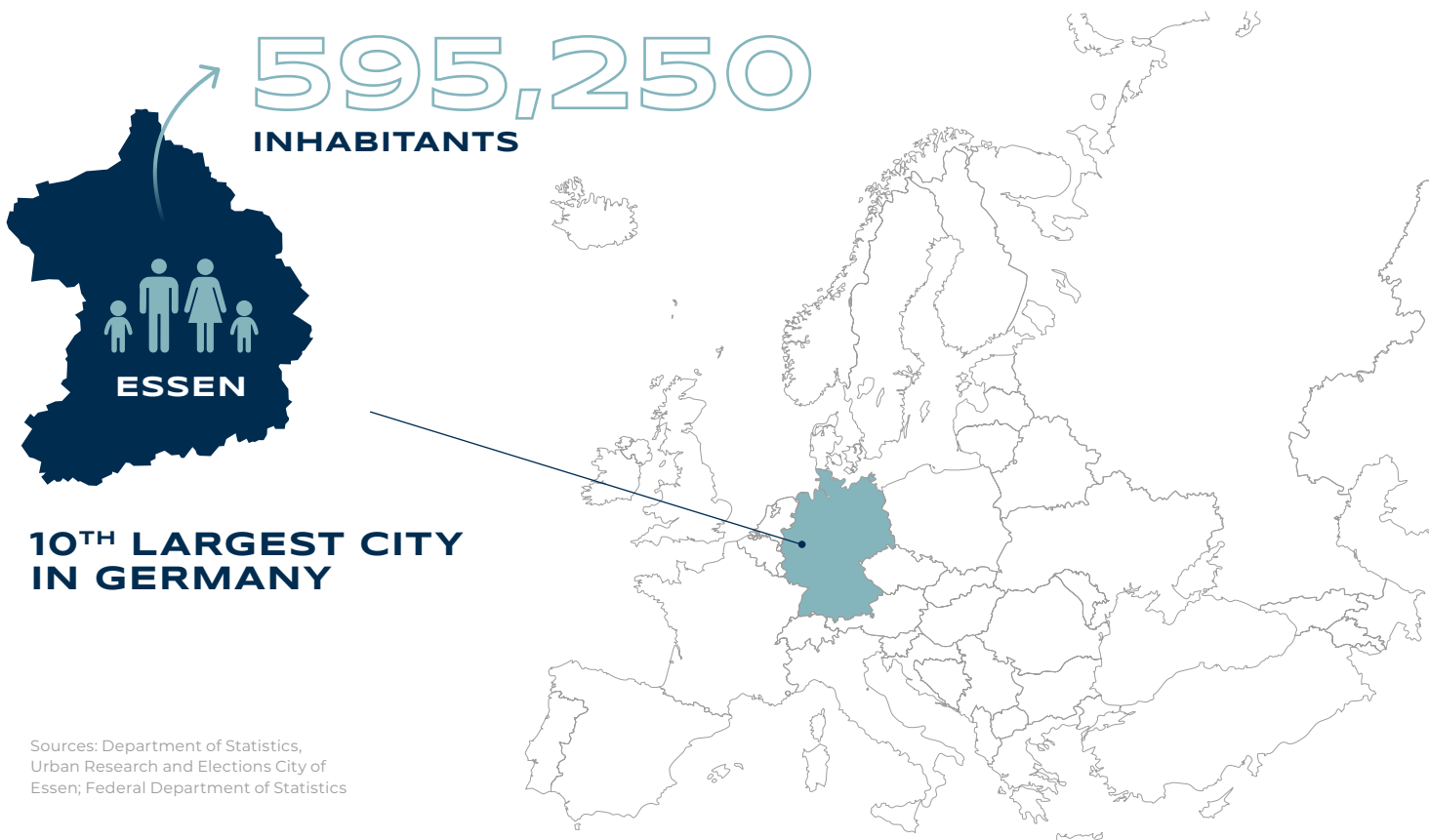




**ESSEN
BUSINESS**

INNOVATION IS OUR DNA

Essen is a top business location in the middle of one of Europe's largest metropolitan areas. With globally operating corporations, an efficient SME sector and technology-oriented start-ups, Essen is already on the clear path to a bright future. The secret of success is the entrepreneurial and exploratory spirit. Behind it are people who drive innovation with commitment and passion.



WHAT WE DO

ESSEN IS THE **LARGEST**
WORKPLACE
LOCATION IN THE RUHR AREA.



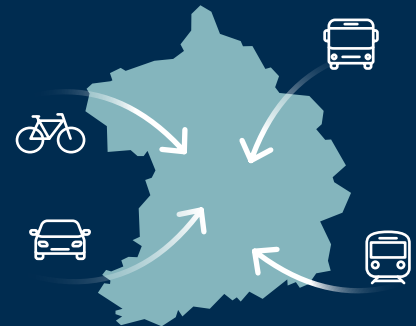
339,115
WORKING
PEOPLE



including
267,060
employees paying
SI contributions

Essen is a strong and attractive labour market center and daily attracts

157,637
WORKING PEOPLE
FROM THE SURROUNDING AREAS.



85.2% of employees paying SI contributions in Essen
WORK IN THE SERVICE SECTOR.

21.3%



of employees paying SI contributions have an

ACADEMIC DEGREE

This means that **Essen has the highest level of graduates in the Ruhr area** and is above the average for North Rhine-Westphalia (17.3%) and Germany (18.7%).

WHAT WE GENERATE

Between 2015 and 2020 the gross domestic product in Essen increased from 23.4 billion € to 26.0 billion €. This corresponds to an increase of 11.1 %. That makes Essen **the third force in North Rhine-Westphalia** after Cologne and Düsseldorf.

Source: Federal Department of Statistics (Publication: 07/2022)



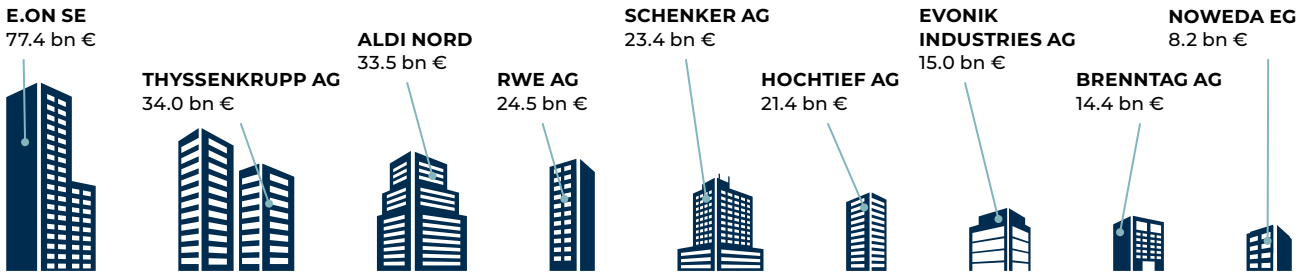
OUR COMPANIES

22,860 COMPANIES INCLUDING MORE THAN 130 START-UPS ARE BASED IN ESSEN

Sources: IT.NRW (Status: 2021); EWG own statistics (Status: 2022)

Three DAX-listed corporates **E.ON**, **RWE** and **Brenntag** and two MDAX-listed companies **thyssenkrupp** and **Evonik** are

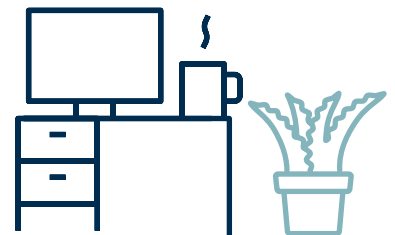
HEADQUARTERED IN ESSEN



9 of the 100 top-selling companies have their headquarters located in Essen (Turnover 2021).

Source: Die Welt (July 4, 2022)

With **3.16 MILLION m²** of the total **RENTAL SPACE**



Essen is **the largest office location in the Ruhr region**. In 2022, Essens office market generated a take-up of around 133,000 m². This is above the average of the last 10 years.

Source: EWG own statistics

OUR YOUNG TALENTS

University of Duisburg-Essen	41,097
FOM University for Economics and Management	25,644*
Folkwang University of the Arts	1,552
Private Art College	254



*Total number of students registered at the FOM headquarters in Essen and their 17 other locations in NRW.

Source: IT.NRW (Status: Winter Term 2021/22)



WHERE WE RELAX

43% of the total area of Essen is green!
Almost the half of the **European Green Capital 2017** consists of parks, nature reserves, forests, lakes and other green areas.

Source: IT.NRW (Status: 12/2021)

THE ADVANTAGES OF OUR LOCATION AT A GLANCE



- central location
- optimal accessibility
- large customer, sales and labour base potential
- attractive employment market
- high quality of life
- affordable housing
- extensive educational opportunities
- variety of cultural and recreational possibilities

More information:



Photo:
EWG, Julius Gnoth

EWG – Essener
Wirtschaftsförderungs-
gesellschaft mbH
Kennedyplatz 5
45127 Essen

www.ewg.de